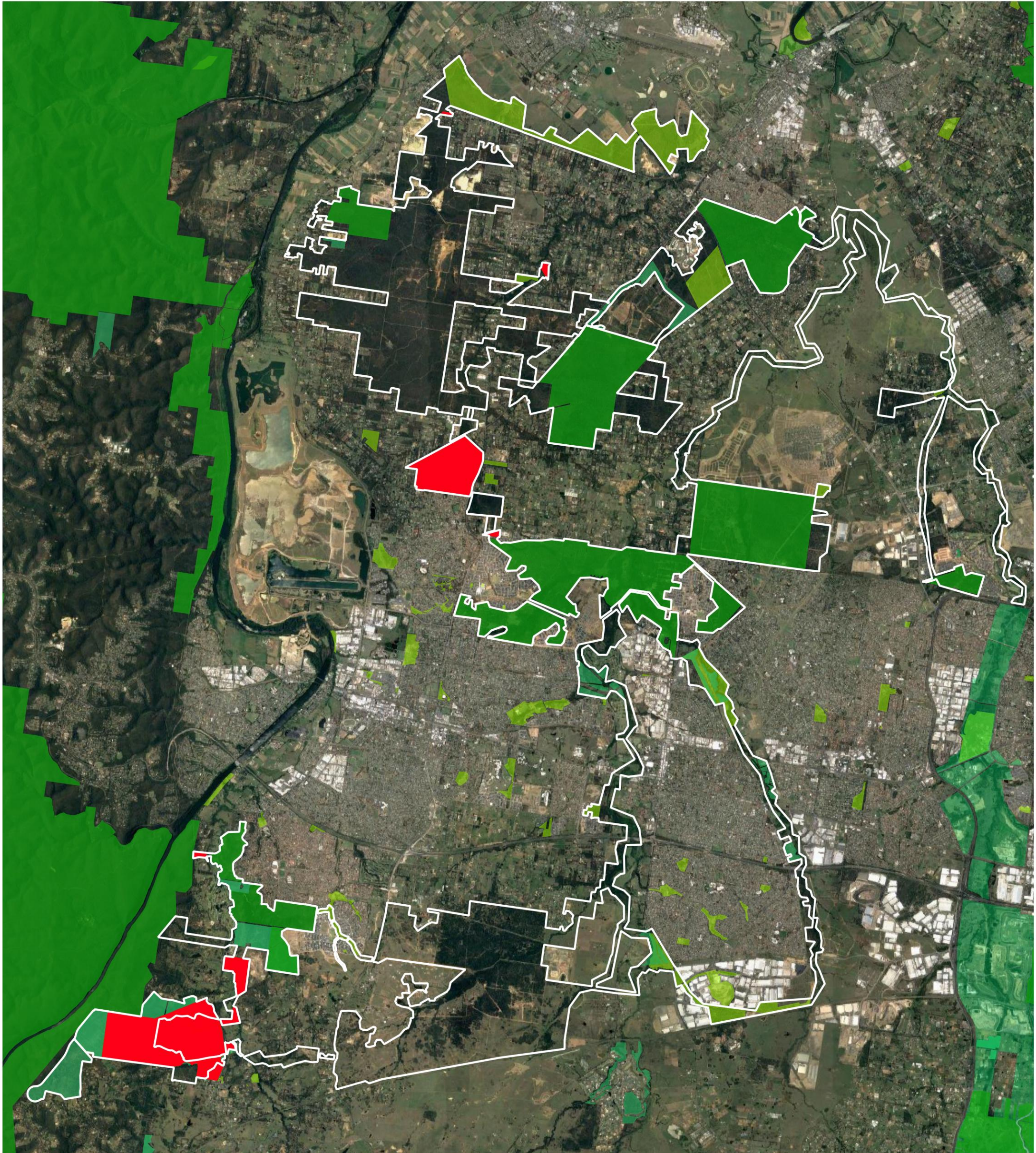





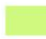


CUMBERLAND CONSERVATION CORRIDOR



The Cumberland Conservation Corridor is a community-led program to link the bushland of the northern Cumberland Plain. The Corridor layout was approved by the NSW Government and incorporated in the NSW BIOMap strategy. Since 2001 the Corridor has received \$50 M in Commonwealth funding, \$27 M from NSW Office of Strategic Lands and private land donations to conserve 440 hectares of land linking our local bushland reserves.

Legend

-  Cumberland Conservation Corridor
-  Community-driven Acquisitions
-  National Parks Reserves
-  Western Sydney Parklands Trust
-  BioBanking/Stewardship Sites
-  Public Reserves